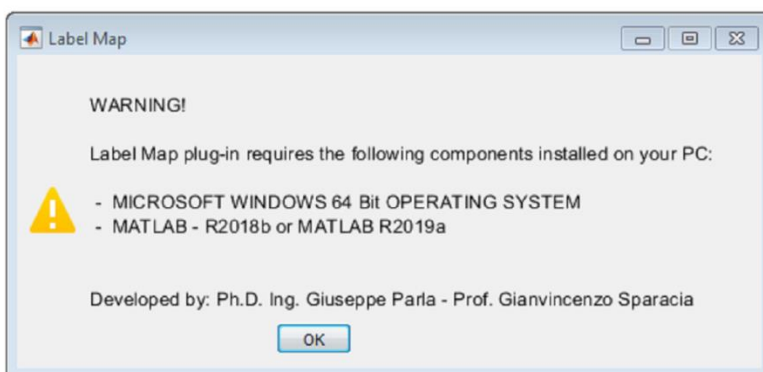




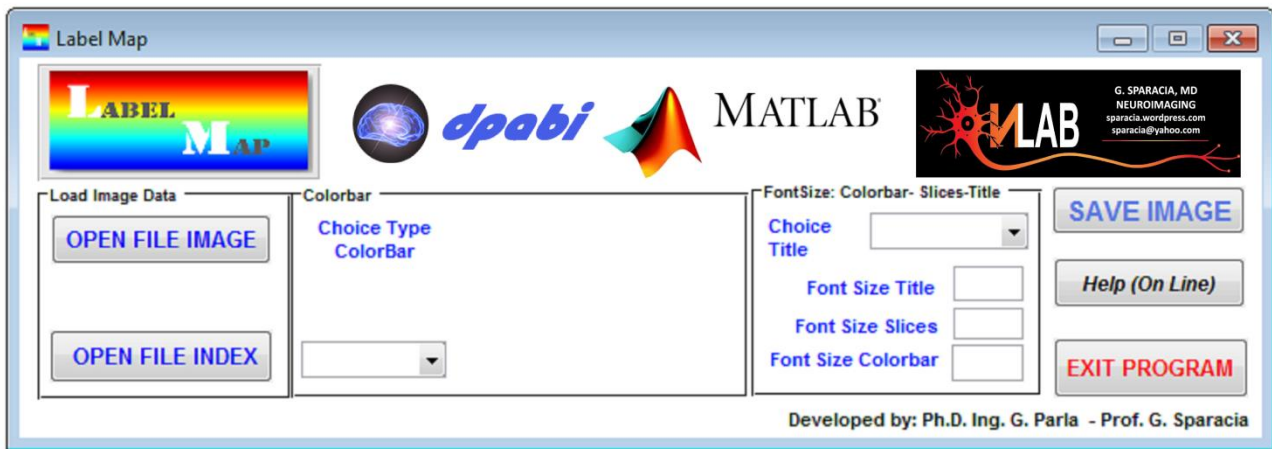
LabelMap is a plugin software developed to enhance image presentation of resting-state fMRI images computed with DPABI developed in May 2019 by Ph.D Ing. G. Parla and Prof. Dr. G. Sparacia at NeuroLab <https://sparacia.wordpress.com/neurolab/>

Download and installation the software

1. After download LabelMap software, extract (unzip) the labelmap.zip into a working directory on your computer.
2. After that, open MatLab and change path to the LabelMap work directory previously created.
3. Otherwise write on MatLab command window the following command: **cd\your working LabelMap directory**
4. After installation, open LabelMap GUI by typing on the MatLab command window:
`>> labelmap`
5. LabelMap will show the message:



After click the OK button the software start the GUI as shown:

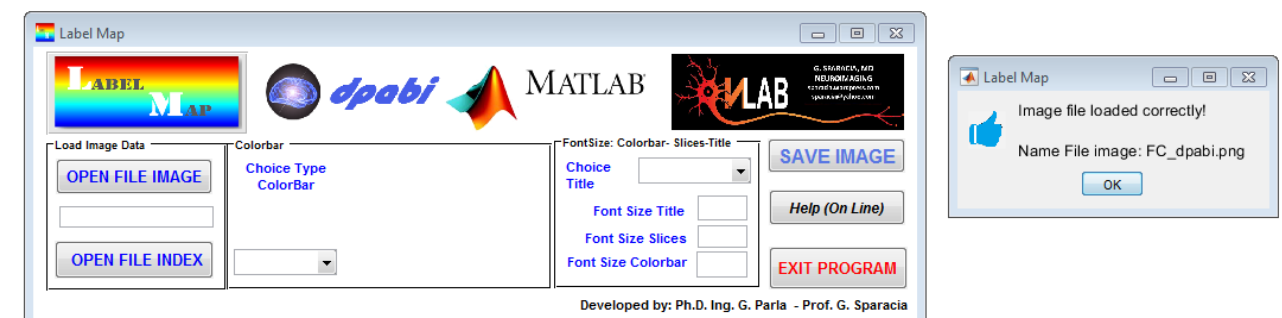


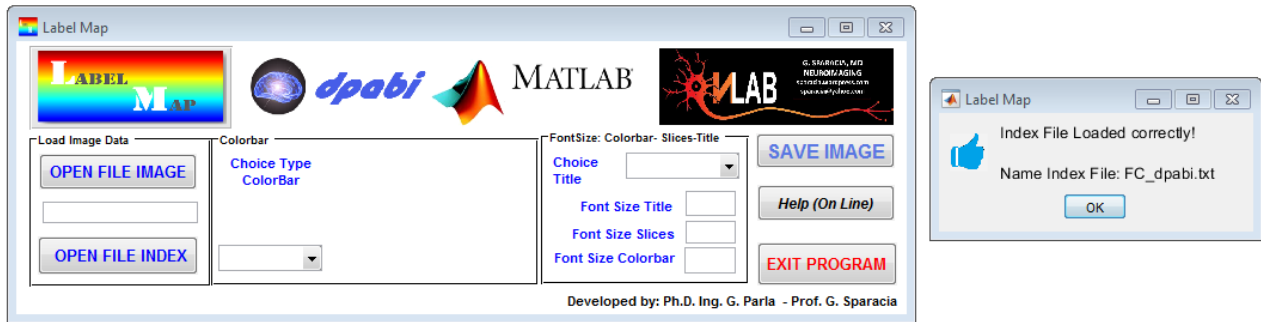
Video Demonstration of LabelMap can be seen at:

<https://youtu.be/dF3KEwRhZaU>

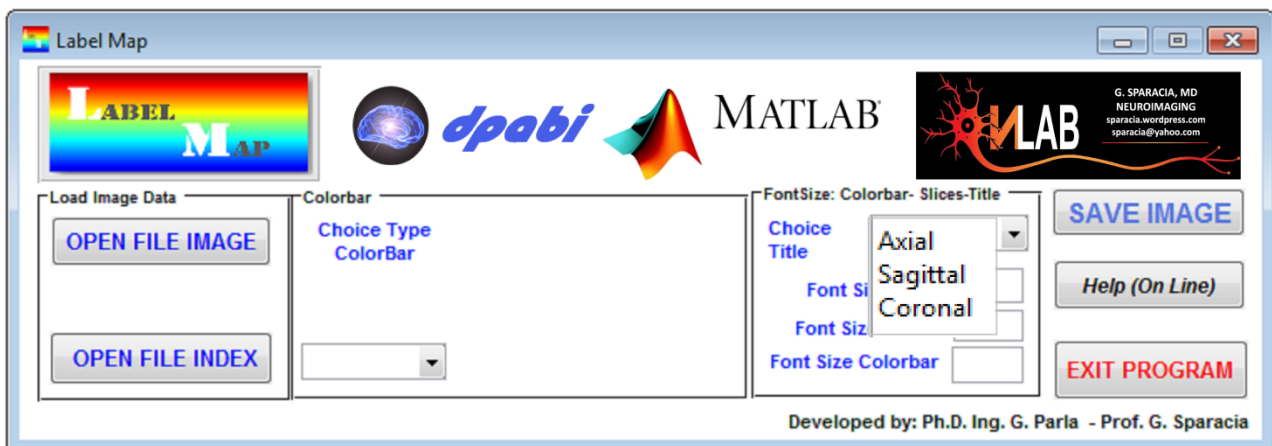
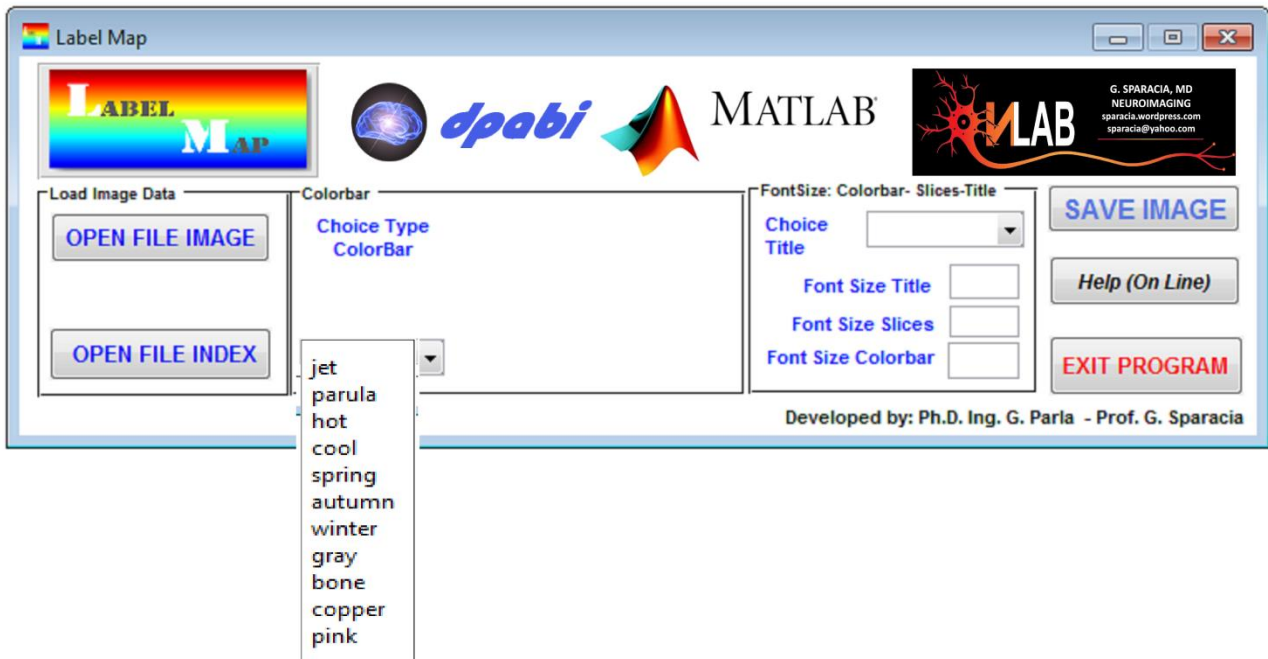
Step by step operation:

1. When the GUI show up, you have to select the image file and index file previously computed with DPABI which LabelMap will present with a graphical layout





Then, you have to select from the popup-menu the colorbar type (jet, hsv, hot, etc.) and the image label (Axial, Sagittal, Coronal)



To create the layout map you have to fill in the numeric field on the GUI based on the type of color bar chosen

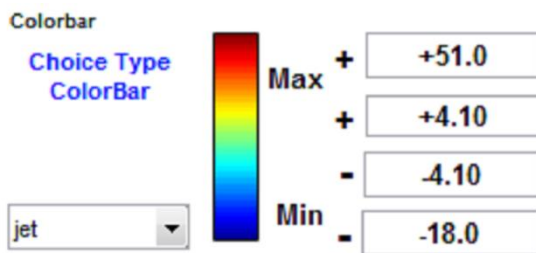
In the example figure below for jet colorbar:

absolute maximum positive value (with + sign)

relative maximum positive value (with + sign)

relative minimum negative value (with - sign)

absolute minimum negative value (with - sign)

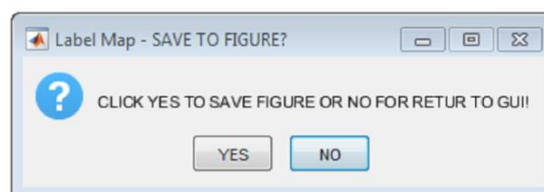


Now you can chose the Font Size for:

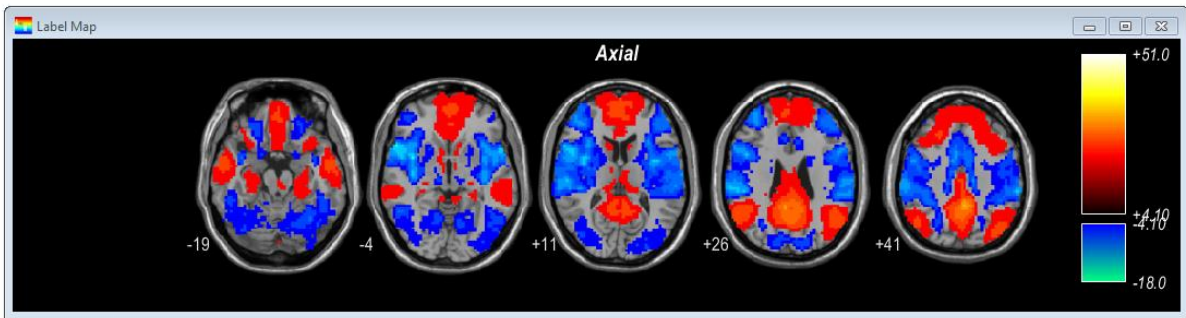
- Title Image
- Color Bar
- Slices index



After compilation of the form you can save the layout image by press the SAVE IMAGE button

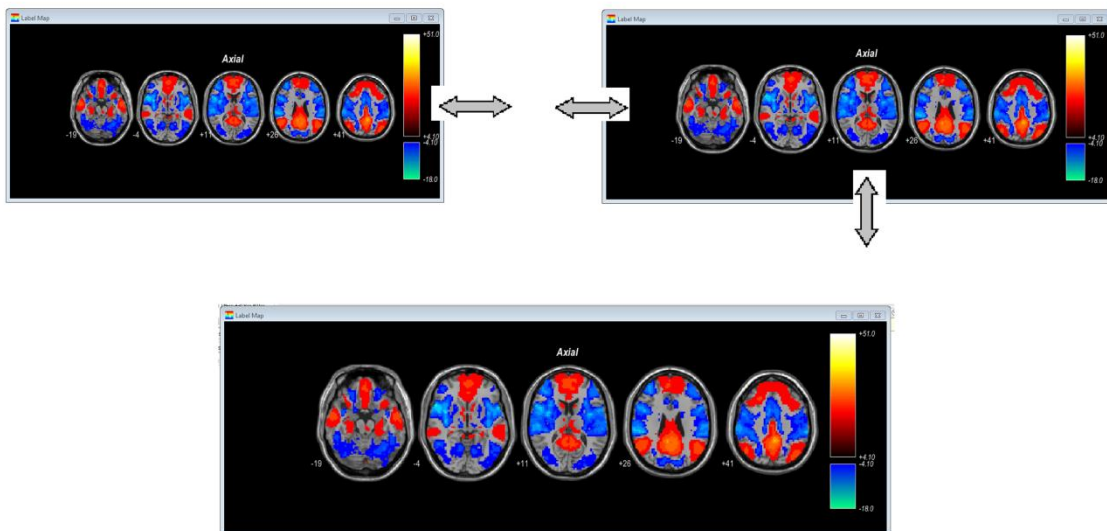
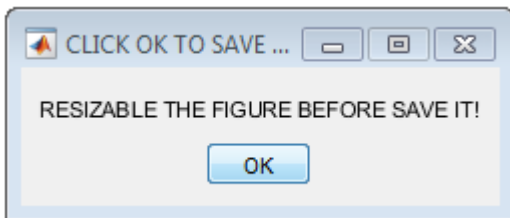


LabelMap then show the preview layout image:

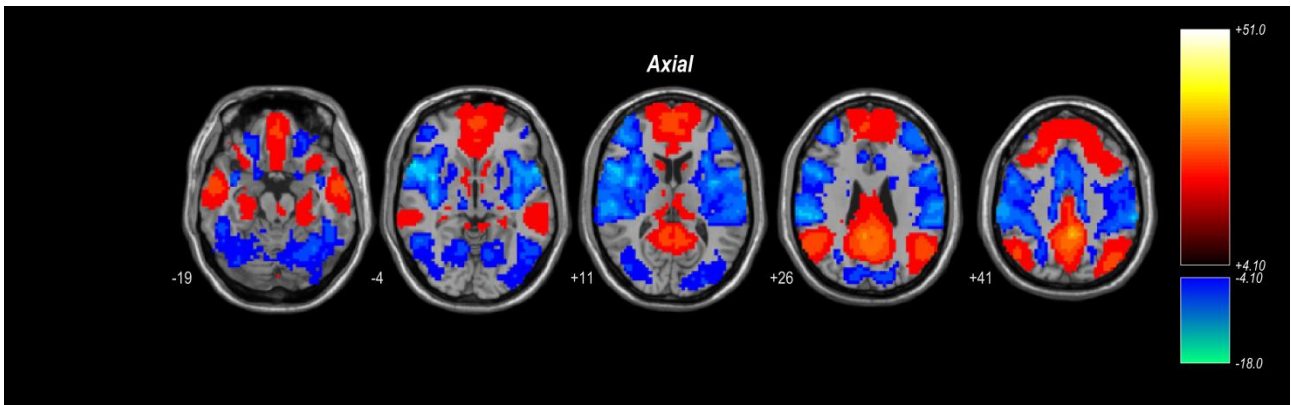


At this point, if the layout image is ok, you can click OK to save the image otherwise click NO to return to GUI and make a different layout image by changing font size etc..

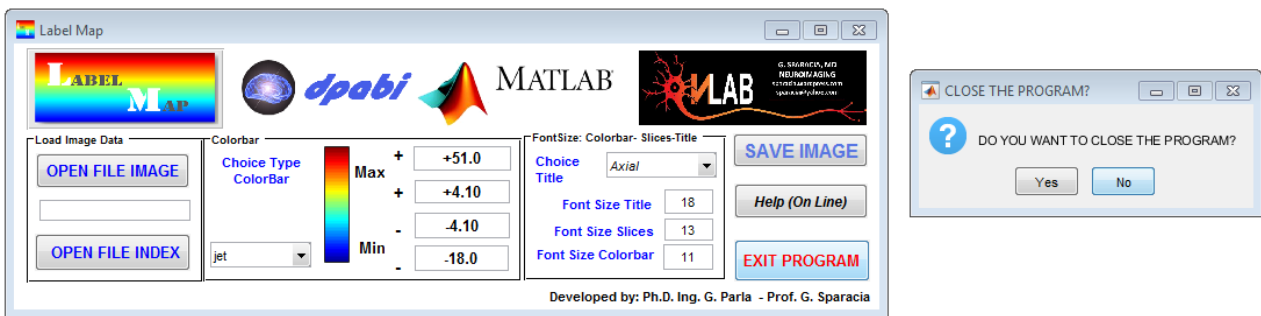
When click YES, you have the chance to resize the image layout before save it.



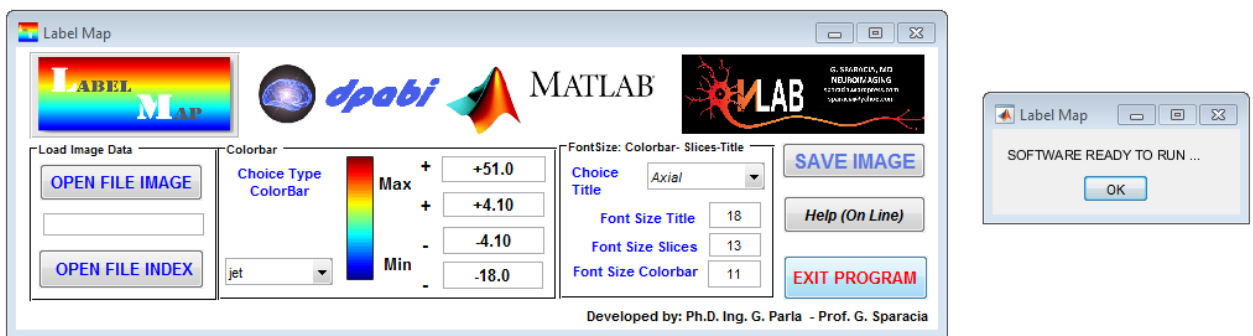
Finally LabelMap will ask to select the directory where to save the final image layout as *.TIFF.



At this point LabelMap presents a dialog box to choose to **CLOSE THE PROGRAM** by select “YES” or to start a new LabelMap layout process by select “NO”



If press “NO” the software presents a new dialog box stating that is ready to run for a new layout presentation



Please note to close LabelMap software ALWAYS with EXIT PROGRAM to clear the memory variables and opened system file

<https://sparacia.wordpress.com/neurolab/>